



GDOT Management Development Program

Jeff Conrad
Matt Glasser
Tim Swink

March 14, 2018



Consultant Management Information System (CMIS) Revisions

TEAM PMMR



CMIS Revisions

To discover inefficiencies within CMIS & propose solutions to make GDOT and our partners operate faster and more efficiently



Story of a Penny



=





Proposed Revisions

- Professional Services Form
 - Add e-signature for consultant certification
- Disadvantaged Business Enterprise Form
 - Add e-signature for consultant certification
 - Add 5 fields for DBE reports
- Progress Report
 - Add a check for Progress Report attachment



Key Metrics

1. 3,000 consultant man hours per year
2. 4,000 GDOT man hours per year
3. \$320,000 per year
4. 200 man hours to revise software



Additional Benefits

- Easier tracking of the Department's consultant DBE goals
- Single monthly progress reports repository
- Improve public image in consultant industry
- Improve morale within GDOT



“I would view the elimination of the consultant & DBE forms as a positive because frankly they are a duplication of work...Without the consultant & DBE forms our billing packets are 100% system generated & leave no room for manual key efforts.”

-AECOM



“Not having to submit the PSC and DBE forms will be an absolute timesaver. We are all for it!”

-Atkins



Team PMMR

- Justin Banks- Program Delivery
- Jeremy Daniel- Construction
- Kelly Gwin- Planning
- Paul Harvey- Material Activities Unit
- Timothy Williams- Construction District 5
- Matt Glasser- Traffic Operations
- Kirkley Renwick- Accounting



Right of Way GIS Mapping

T²

Why is this Project Needed?

Need to...

- Have a centralized data resource
- Be able to determine lateral limits
- Make the data easier to access and interpret



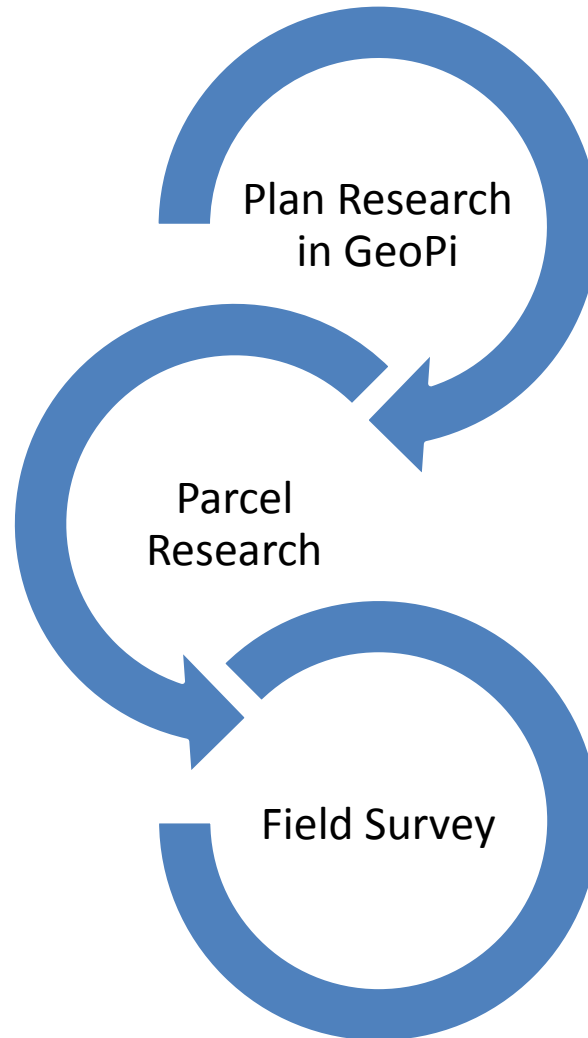


Benefits of Implementing

1. Reduces Research Time
2. Reduces Response Time for Public Inquiries
3. Reduces Costs

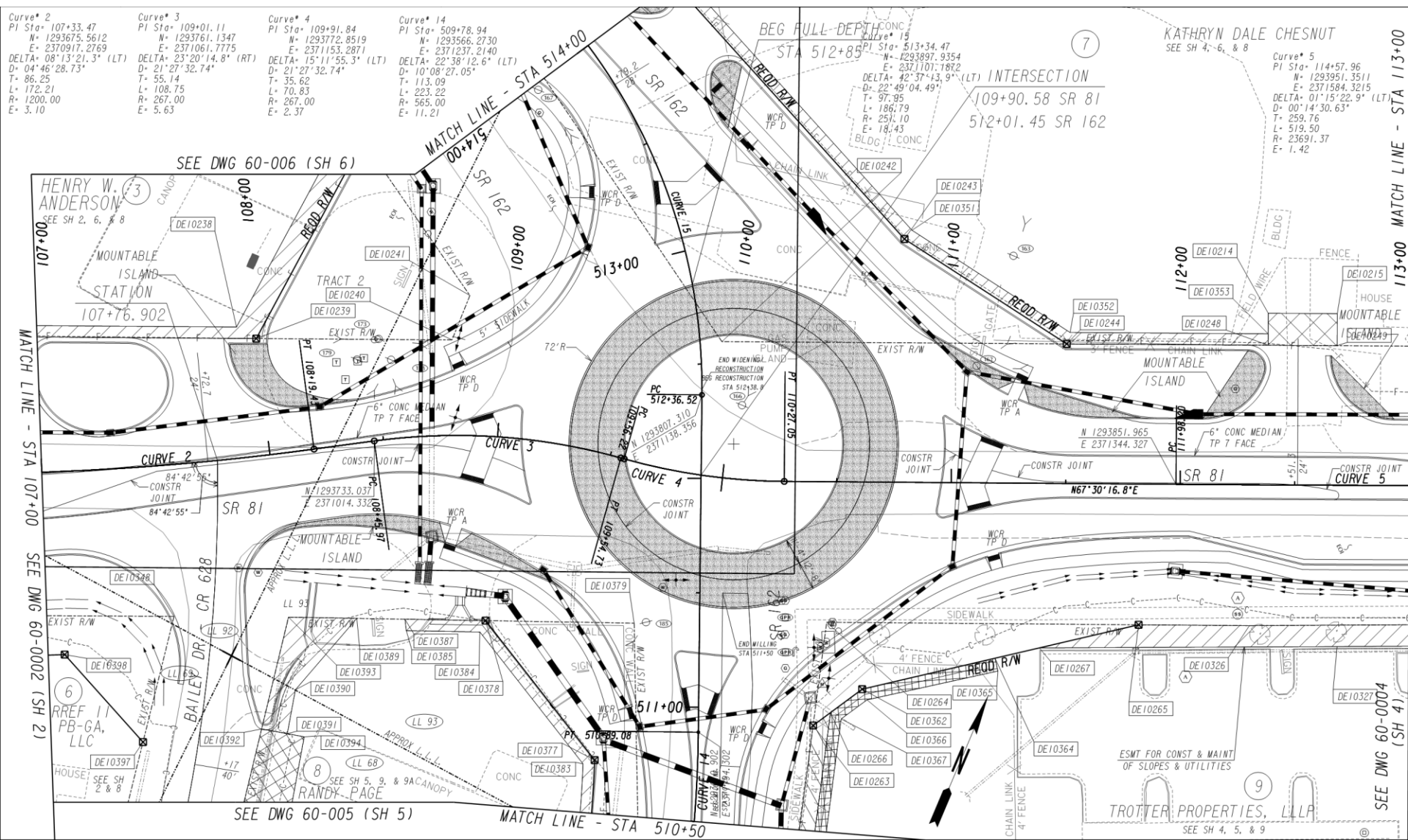


Current Procedure





Plan Research in GeoPi





FY17 Costs for D5

Research Only

50 Requests × \$160/ request = \$8,000

Research +

40 Requests + \$17,000

Total FY17 Costs

\$25,000

\$175,000



FY17 Signal Upgrades

- FY17 signal projects
 - 9 signal projects
 - \$71,871,874

25%-50%
of
PE COSTS

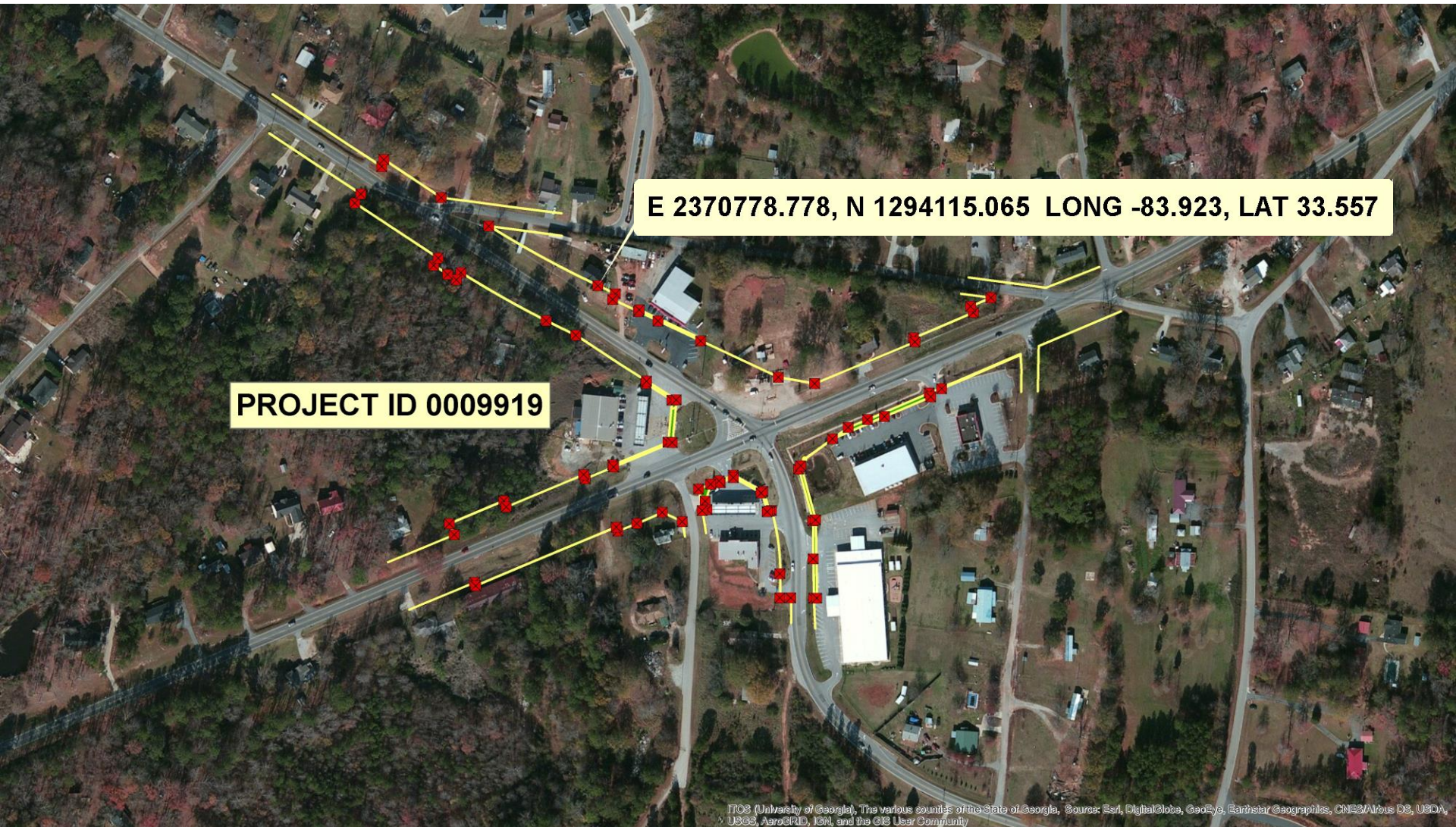
71,871,874



Proposed Next Steps

- Create procedural steps and insert information into the correct manuals/guides
- The electronic ROW file(s) will be imported into GIS
- The results would be a GIS layer that can be viewed in Geoπ
- Prioritization would be based on the Department's needs with input from District Offices
- Not to be used to obtain Right of Way for purchase

Project PI 0009919 Right of Way



E 2370778.778, N 1294115.065 LONG -83.923, LAT 33.557

PROJECT ID 0009919

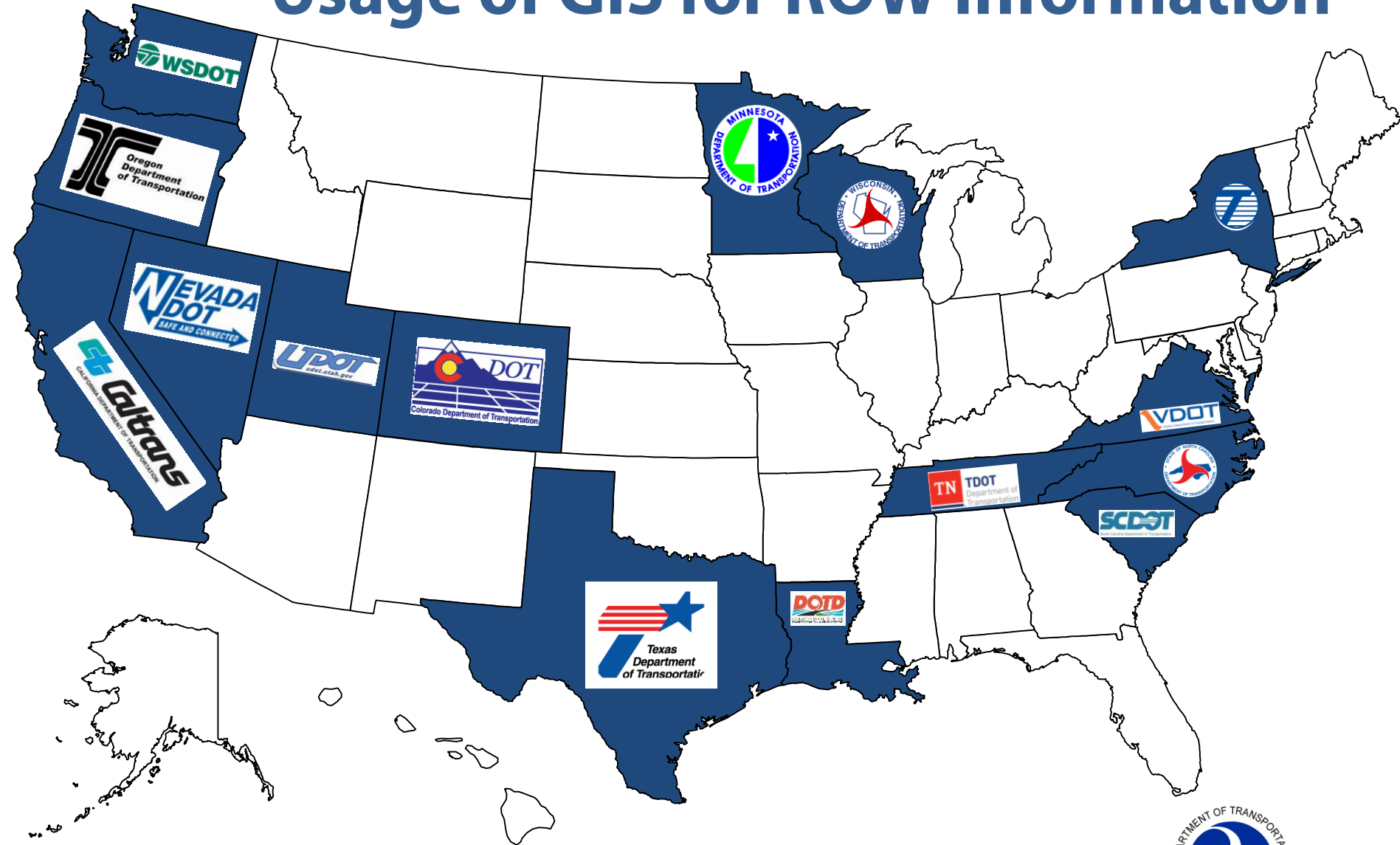


Project PI 0009919 Permanent Easement





Usage of GIS for ROW Information



**Property Management Tools and Techniques: Models for the Effective Management of Real Property Assets at State Departments of Transportation, 2012.*





Offices in Support of Project

- Office of Design Policy and Support
- Office of IT Applications
- Office of Planning
- Office of Program Delivery
- Office of Right of Way
- Office of Roadway Design
- Office of Traffic Operations
- Office of Transportation Data



Moving Forward

- State ROW Office (Owner)
 - Partnership with our Team
- Authorize funds
- Procure Consultant



Team T²

- Ramesh Bala (Office of IT Applications)
- Christina Barry (Office of Traffic Operations)
- Lankston Johnson (District 7 Area 3 Manager)
- Michael Lee (District 2 Preconstruction)
- Michelle Pate (Office of Design Policy & Support)
- Merishia Robinson (Office of Program Delivery)
- Brian Scarbrough (District 5 Maintenance)
- Tim Swink (Office of Operational Purchasing)